



**MIT-CHIEF**

MIT-CHINA INNOVATION AND  
ENTREPRENEURSHIP FORUM



**MIT · CHIEF**

MIT-CHINA INNOVATION AND ENTREPRENEURSHIP FORUM  
麻省理工学院中国创新与创业论坛

WELCOME TO THE

# **2017 MIT-CHIEF ANNUAL CONFERENCE**

# ANNUAL CONFERENCE

The MIT-CHIEF Annual Conference is a high-profile forum that addresses key issues in technology, innovation, and entrepreneurship in both China and the U.S., providing a platform upon which high-impact discussions and collaborations can take place. We bring the best minds at MIT and around the Greater Boston Area to form panels and speeches in a way that will inspire the audiences and serve as the indicator of next three years' technology advancements in each field of the topics.

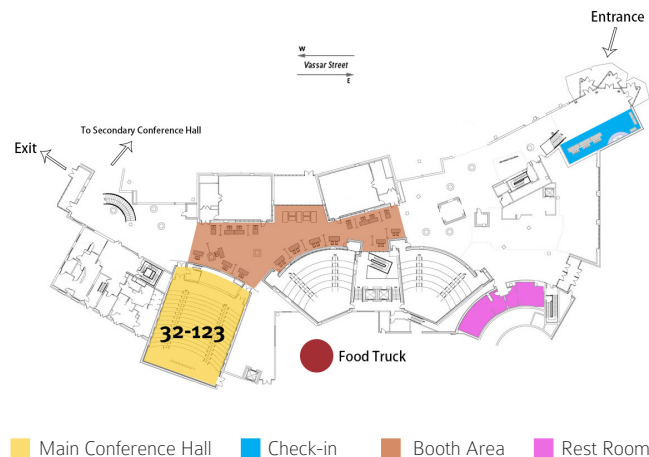


## MAP

### 2017 MIT-CHIEF Annual Conference

**Date:** 2017.11.17-2017.11.19

**Location:** MIT STATA CENTER, 32 VASSAR STREET  
CAMBRIDGE, MA 02139



# DAY 1

Friday, November 17

18 : 30 - 19 : 00 **Keynote** | Robert Weinberg  
19 : 00 - 20 : 30 **Panel** | Startup Development

# DAY 2

Saturday, November 18

8 : 30 - 9 : 00 Check-in & Breakfast  
9 : 00 - 9 : 10 **Welcome Address** | Co-Presidents  
9 : 15 - 9 : 35 **Opening Remarks** | Gang Chen  
9 : 40 - 10 : 55 **Panel** | Artificial Intelligence  
11 : 00 - 11 : 30 **Keynote** | Wei-Ying Ma  
  
11 : 30 - 12 : 30 Break  
  
12 : 35 - 13 : 50 **Panel** | Future City  
13 : 55 - 14 : 25 **Keynote** | Karl Iagnemma  
14 : 30 - 15 : 45 **Panel** | Healthcare  
15 : 50 - 16 : 20 **Keynote** | George Church  
16 : 20 - 16 : 50 **Keynote** | Yazhe Zhang  
16 : 50 - 18 : 30 Contest Finale

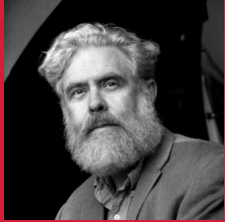
# SCHEDULE

# DAY 3

Sunday, November 19

9 : 00 - 9 : 30 Breakfast  
9 : 30 - 10 : 45 **Panel** | Autonomous Driving  
10 : 50 - 11 : 20 **Keynote** | Frank van Mierlo  
11 : 20 - 12 : 35 **Panel** | Energy Materials  
  
12 : 35 - 13 : 30 Break  
  
13 : 30 - 14 : 50 **Panel** | Fintech  
14 : 55 - 15 : 25 **Keynote** | Hong Kong X  
15 : 30 - 16 : 00 **Keynote** | Siobhan Dullea  
16 : 00 - 17 : 30 **Panel** | Women in Entrepreneurship

# KEYNOTE SPEAKERS



**George Church**

**George Church** is a professor of Genetics at Harvard Medical School and the Director of *PersonalGenomes.org*, which provides the world's only open-access information on human Genomic, Environmental & Trait data (GET). His 1984 Harvard PhD included the first methods for direct genome sequencing and molecular multiplexing & barcoding.



**Robert Weinberg**

**Robert Weinberg** is a Professor for Cancer Research at Massachusetts Institute of Technology (MIT), and director of the Ludwig Center of the MIT. His research is in the area of oncogenes and the genetic basis of human cancer. He is also affiliated with the Broad Institute and is a founding member of the Whitehead Institute for Biomedical Research.

**Gang Chen** is currently the Head of the Department of Mechanical Engineering and the Carl Richard Soderberg Professor of Power Engineering at MIT, and is the director of the "Solid-State Solar-Thermal Energy Conversion Center (S3TEC Center)".



**Gang Chen**

**Karl Iagnemma** is a principal research scientist in the Mechanical Engineering department at MIT. He holds a B.S. from the University of Michigan, and a M.S. and Ph.D. from MIT, where he was a National Science Foundation Graduate Fellow. He currently serves on the editorial board of the IEEE Transactions on Robotics and the Journal of Field Robotics.



**Karl Iagnemma**

# KEYNOTE SPEAKERS



**Yazhe Zhang**

**Yazhe Zhang** serves as a Partner and Board Member at ZhenFund. Mr. Zhang also serves as a Council Member at 21 Century's Education Research Institute and as an Advisor at Boyu Capital. Previously, Mr. Zhang worked for New Oriental Education & Technology Group.



**Frank van Mierlo**

**Frank van Mierlo** is the CEO of 1366 Technologies, a solar technology company he started together with a team of engineers from RPI and MIT in 2008. He holds engineering degrees from MIT and Stanford and a business degree from Insead.

**Siobhan Dullea** oversees global operations at MassChallenge and also supports the organization's future expansion. She served as the Chief Growth Officer of The Grommet, and was a founding member of Communispace Corporation.



**Siobhan Dullea**

**Wei-Ying Ma** is a Vice President at Toutiao where he leads its AI Laboratory. He is leading fundamental research and developing new technologies in the areas including machine learning, natural language computing, visual computing, speech processing, information retrieval, data mining and knowledge engineering, distributed system, and human computer interaction.



**Wei-Ying Ma**

## INTRO

How to rapidly develop and test ideas by gathering massive amounts of customer and marketplace feedback? Many startups fail by not validating their ideas early on with real-life customers. In order to mitigate that, speakers will talk about how to get out of the building and search for the real pain points and unmet needs of customers. Only with these can the entrepreneur find a proper solution and establish a sustainable business model. Building a startup is not simply building an execution plan for a business model that the entrepreneur thinks will work, but rather, a search for the actual business model itself.



**Richard Xu**  
(Moderator)



**Wei An**

**Richard Xu** is the founding partner and CEO at Alpha Startups. He founded and led China Cache's (CCH) NASDAQ IPO as COO in 2000. Prior to that, Richard was General Manager of South China at Microsoft, General Manager of Data Business at China Netcom Co. Ltd.

**Wei An** is the Partner and Vice-President of International Business Strategy. He joined BaishanCloud in 2016 to oversee corporate international business strategies, corporate communications, and partnership alliances. Wei has over 25 years of experience in the IT and telecom industries both in China and the U.S.

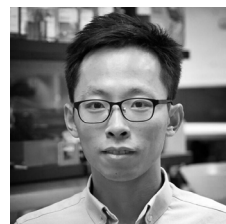
## STARTUP DEVELOPMENT PANEL

**Shuhao Wen** serves as the CEO of XtalPi Inc., a pharmaceutical technology company leading in Intelligent Digital Drug Development. He received his doctorate in the sciences from Chinese Academy of Sciences, and completed his post-doctoral research in quantum chemistry at MIT.



**Shuhao Wen**

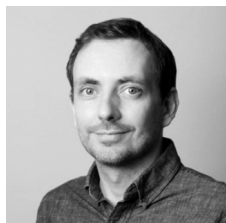
**Zhifei Ge** is the cofounder and CTO at Cam Med LLC. Cam Med is developing the Evopump, the first truly bandage-like wearable patch pump for delivering one or multiple injectable medications. He holds a B.S. from Shanghai Jiao Tong University and a M.S. and a PhD from MIT. He was awarded Medtech's Rising Star 2017 by MD+DI.



**Zhifei Ge**

## INTRO

From the championship of Game Go to the outstanding player of eSports, artificial intelligence (AI) has been playing an increasingly important role in this world. From autonomous driving to intelligent home, AI has been providing convenience to our daily life. From cancer diagnosis to drug design, AI has been showing its potential in improving healthcare. In this new era, how is the popularity of AI going to change us and the world we live in? What kind of opportunities and challenges has AI brought to us? In the annual conference of MIT-CHIEF, Artificial Intelligence Forum will present you different thoughts and perspectives from AI experts in different industries and academia.



**Will Knight**  
(Moderator)



**Lisa Amini**

**Will Knight** is the senior editor for AI at MIT Technology Review. He mainly covers machine intelligence, robotics, and automation, but he is interested in most aspects of computing.

**Lisa Amini** is Director, IBM Research Cambridge, and Acting Director of the MIT-IBM Watson AI Lab. She is also an IBM Distinguished Engineer.

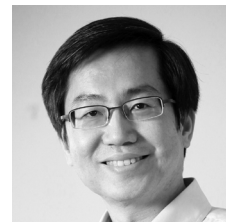
## ARTIFICIAL INTELLIGENCE PANEL

**David Sontag** is the Hermann L. F. von Helmholtz Career Development Professor in the IMES and an Assistant Professor in the Department of Electrical Engineering and Computer Science (EECS) at MIT. He is also a principal investigator in the MIT Computer Science and Artificial Intelligence Laboratory (CSAIL).



**David Sontag**

**Wei-Ying Ma** is a Vice President at Toutiao where he leads its AI Laboratory. He is leading fundamental research and developing new technologies in the areas including machine learning, natural language computing, visual computing, speech processing, information retrieval, data mining and knowledge engineering, distributed system, and human computer interaction.



**Wei-Ying Ma**

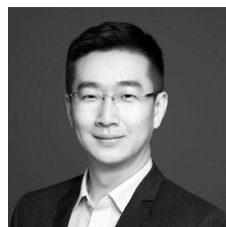


## INTRO

By 2050, 75% of the world's population will be living in cities. As more and more people move to cities, more and more of the world's challenges – and solutions- will be concentrated in cities, too. From real estate, mobility, energy, and infrastructure to community amenity, public health, education, and workforce, cities will increasingly define the future in America, China, and around the world. Cities that capitalize on the technology revolution will lead the way. In the Future City Panel, urban educator, investor, and entrepreneurs will be discussing how city-focused innovation and entrepreneurship can deliver both public benefits and competitive venture returns.



**Zhenzhen Tan**  
(Moderator)



**Jian Zhang**

**Zhenzhen Tan** is the executive director of MIT China Future City Lab. MIT China Future Lab is the first-ever MIT backed research and entrepreneurship lab that brings academia, entrepreneurs, government and industries together on urban challenges in China.

**Jian Zhang** is the Founder and CEO of Nashi Space, has achieved great success in the entrepreneurial space in the past 10 years. Nashi Space was founded in 2013 and has been the largest, the most professional, and the most popular ecosystem that provides services to enterprises with business space as the entrance.

## FUTURE CITY PANEL

**Mike Xu** is the managing director of Fosun Capital and the managing director of China Momentum Fund. He is in charge of Fosun's private equity investment and M&A deals in Technology, Media, and Telecom (TMT) sector, focusing on IoT/semiconductor, cloud computing, and AI segments within IT, healthcare, finance, and e-commerce industries.



**Mike Xu**

**Pan Chao** led the launch of Ofo in the greater Boston area for the company. Founded in 2014 in Beijing, China, ofo is the first and largest dock-less bike sharing company in the world. With 8 million bikes on the ground and 25 million orders per day, ofo is currently operating in 14 countries and more than 180 cities.



**Pan Chao**



## INTRO

In the last few decades, immunotherapy has become an important part of treating certain types of cancer. Updated types of immune treatments are now being studied, and they'll impact how we cure cancer in the future. With the help of capital and innovation, we are eagerly looking forward to turning this treatment from research to clinic trial and making it more effective and affordable.



**Harvey Lodish**

**Harvey Lodish** is a MIT Professor, Founding Member of Whitehead Institute for Biomedical Research and a Member of the National Academy of Sciences. He was also a founder and scientific advisory board member of Genzyme, Inc., Arris Pharmaceuticals, Inc, Millennium Pharmaceuticals, Inc, and Allozyne, Inc. Dr. Lodish's research focuses on cell surface proteins and other important areas at the interface between molecular cell biology and medicine.



**Jianzhu Chen**

**Jianzhu Chen** is a professor at MIT and a co-director of the Center for Infection and Immunity, the Chinese Academy of Sciences. Dr Chen's laboratory focuses on a particular class of immune cells — CD8 T-cells —which play an important role in the ability of the immune system to respond more strongly to threats that have been encountered before.

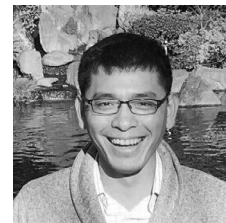
## HEALTHCARE PANEL

**Zhen Su**, Vice President and Head of Global Medical Affairs - Oncology at EMD Serono leads medical strategy and the team for the franchise. Dr. Su has strong clinical expertise in oncology, immuno-oncology and urology. He has held positions in academic and pharmaceutical medicine, including clinical development, medical affairs and business development. Prior to EMD Serono, Dr. Su served as Associate Vice President and Global Head of Jevtana® (cabazitaxel) at Sanofi.



**Zhen Su**

**Wei Zhao** joined WuXi Healthcare Ventures (now 6 Dimensions Capital) in 2016. He was a Senior Life Sciences Specialist at L.E.K. Consulting Boston office, and a postdoctoral fellow at Mass. Eye and Ear Infirmary and Harvard Medical School. Wei obtained his Ph.D. in Neuroscience from Northwestern University, and B.S. from Tsinghua University.



**Wei Zhao**

## INTRO

Today, autonomous cars can navigate in highways and city streets, handle traffic lights and road signs, and make intelligent decisions based on sensor data. Their enormous impact on our societies and the huge market potential have attracted research institutions, industry leaders and startups to put great efforts into this area. In this panel, we will invite leading experts in the field to share their recent work and discuss some obstacles on the paths forward. How far away are we from having safety-guaranteed driverless vehicles? What does the future transportation system look like when autonomous vehicles dominate?



**David Rotman**  
(Moderator)



**Bryan Reimer**

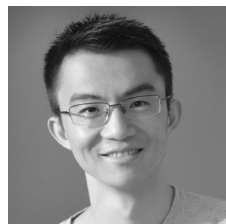
**David Rotman** is the editor of MIT Technology Review. He supervises editorial for both the print magazine and the website. Before joining MIT Technology Review, Rotman was managing senior editor at Chemical Week magazine in New York City.

**Bryan Reimer**, Ph.D., is a Research Scientist in the MIT AgeLab and the Associate Director of The New England University Transportation Center at MIT. He received his Ph.D. in Industrial and Manufacturing Engineering from the University of Rhode Island.

# AUTONOMOUS DRIVING

## PANEL

**Xiaodi Hou**, the founder of TuSimple, is a PhD graduate from California Institute of Technology in Computation and Neural System. He developed the Spectral Saliency Theory. And he is the co-chair of Connected and Autonomous Vehicles workshop of AAAI in 2017.



**Xiaodi Hou**

**Jinhua Zhao** is the Edward and Joyce Linde Associate Professor of City and Transportation Planning at MIT. Prof. Zhao brings behavioral science and transportation technology together to shape travel behavior, design mobility system and reform urban policies.



**Jinhua Zhao**

## INTRO

How to build a sustainable society? The depletion of fossil fuel, coupled with the ever-increasing energy consumption, keeps posing new demands in novel regenerative energy. The development and use of these novel types of energies put new challenge in materials for energy storage. So what would be the next generation energy conversion and storage techniques? Can they meet the demand of energy consumption on earth? Will the development of advanced manufacturing techniques and architects design be able to keep up with new energy requirements, if not human living requirements?



**Ju Li**  
(Moderator)



**Mark Goulthorpe**

**Ju Li** is a BEA Professor of Nuclear Science and Engineering and a professor of Materials Science and Engineering at MIT. He was a winner of 2005 Presidential Early Career Award for Scientists and Engineers, the 2006 MRS Outstanding Young Investigator Award, and 2007 TR35 award from Technology Review magazine.

**Mark Goulthorpe** is an Associate Professor at MIT Dept of Architecture, teaching in undergraduate, graduate and post-graduate programs, and conducting research in digital design and fabrication. He is currently Head of the new Design Stream in the SMArchS program.

## ENERGY AND MATERIALS

**Hongmei Zhang** is the Director in Center for Technology Strategy and Development at ENN Group. She is also the co-founder and CEO of ST New Energy Company. She has been committed to advancing new energy and materials, and currently focuses on working with ST New Energy.



**Hongmei Zhang**

**Frank van Mierlo** is the CEO of 1366 Technologies, a solar technology company he started together with a team of engineers from RPI and MIT in 2008. He holds engineering degrees from MIT and Stanford and a business degree from Insead.



**Frank van Mierlo**

**Fikile Brushett** worked at MIT Chemical Engineering Department, and he currently holds the Raymond A. (1921) Helen E. St. Laurent Career Development Chair. He completed his Ph.D. in Chemical Engineering at the UIUC. His research focused on flow batteries.



**Fikile Brushett**

## INTRO

As one of the cradles of Financial Technology, Boston made significant contribution to the development of FinTech in Digital Currencies, Robo-Advisors, Payment and other domains. This year's FinTech panel will focus on the future of money, especially digital currencies. 2017 witnessed a series events about BitCoin and other digital currencies. While Japan officially recognizes BitCoin exchanges, China tightens its ban of cryptocurrencies with new directive. The price of Bitcoin soared from less than \$1000 to more than \$7000 within a year. Bringing experts from lab, industry and startups, we hope to provide the audiences an opportunity to gain more insights of the heated topic and explore the future of money.



**Trond Undheim**  
(Moderator)



**Jennifer Jiang**

**Trond Undheim** is the Program Director of MIT Startup Exchange. He is also the Founder of Yegii, Inc., the insight network, Ionate, Inc., the cloud-computing company, and a Director of Tautec Consulting.

**Jennifer Jiang** is a senior banking executive with more than 18 years' experience in investment banking and asset management. She was the Global Head of RMB Solutions at J.P. Morgan. She has presented widely at international capital market conferences, International chambers and policy discussion forums.

## FINTECH PANEL



**Neha Narula**

**Neha Narula** is the Director of the Digital Currency Initiative, a part of the MIT Media Lab focusing on cryptocurrencies and blockchain technology. While completing a PhD in computer science at MIT, she built fast, scalable distributed systems and databases. She is interested in distributed systems, databases, cryptocurrencies, and programmable money.



**Chris Yim**

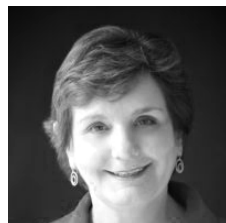
**Chris Yim** is CEO & Co-Founder of LibertyX, the largest retail bitcoin exchange in the US. LibertyX launched America's first bitcoin ATM in 2014 to make bitcoin easy and accessible, and today has thousands of locations across the U.S. and Australia. Mr. Yim was a venture capitalist in the corporate venture arm of Siemens AG and an investment banker at Centerview Partners. Mr. Yim graduated from MIT with a degree in Chemical Engineering.

## INTRO

The Golden Age for women entrepreneurs has just begun. In recent years, the rate of women entrepreneurs has been growing at a percentage at least double that of their male counterparts. A microcosm of the trend is CNBC'S inaugural Upstart 25 list, where 10 of the company fledglings were founded by women in a host of industries — from neuroscience to finance to retail. The 2017 MIT-CHIEF Annual Conference Women in Entrepreneurship Panel shares experience and stories of women entrepreneurs in Boston.



**Siobhan Dullea**  
(Moderator)



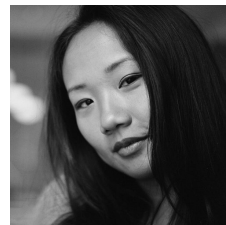
**Jean Hammond**

**Siobhan Dullea** oversees global operations at MassChallenge and also supports the organization's future expansion. She served as the Chief Growth Officer of The Grommet, and was a founding member of Communispace Corporation.

**Jean Hammond** is currently a Co-Founder and Partner at LearnLaunch. She is an active angel investor and a member at Launchpad, Hub and Golden Seeds angel groups.

## WOMEN IN ENTREPRENEURSHIP

**Peggy Yu** is the COO of Startup Institute, a transformational program helping people develop skill sets in the economy of innovation. She earned her MBA degree at Harvard Business School, and was the Interim Director at the Rock Center for Entrepreneurship at Harvard Business School.



**Peggy Yu**

**Deb Kemper** is a Managing Director and the Golden Seeds Boston Forum Operating Committee Chair. She is an active early-stage investor, mentor to entrepreneurs.



**Deb Kemper**

**Marie Meslin** is the Executive Director for The Capital Network (TCN) and founded TCN's Female Founders Fellowship Program in 2016. She also runs Greenhorn Connect, and has previously worked with innovation consultancies.



**Marie Meslin**

## INTRO

The Business Plan Contest is dedicated to contributing to a global entrepreneurial ecosystem based in the Greater Boston area through series of events that:

- Nurture and activate entrepreneurs, through inspiring their spirit of innovation, training their comprehensive skills and expanding their social network.
- Equip entrepreneurs with resources, including mentors, funding, industry expertise, legal service and and know-how of marketing and business models, from both the U.S. and China.
- Provide entrepreneurs in the U.S. with valuable connections in China and help on immersing their startups into the Chinese market.
- Offer direct cash awards that help startups accelerate on their way to success. Plus chances to get term sheets.



**GeneTank**

**GeneTank.** GeneTank creates an AI-as-a-service marketplace for health care, which fills the gap of sharing of personal genetics and medical data. GeneTank allows individuals to donate their DNA information to help build powerful and privacy-protected AI models to understand the genetic basis of various diseases and health outcomes. Unlike other genetic testing companies, which archive people's personal information and DNA data, GeneTank doesn't touch the raw data, but instead creates a blockchain system and smart contracts to ensure the highest level of privacy for owners while their data is used to build AI.

## CONTEST FINALE

**PipeGuard Robotics.** At Pipeguard Robotics, we provide a robotic solution to help municipal water companies find their pipe leaks early, months before those leaks causes sinkholes in the streets. Thus we enable preventative maintenance, save water and protect infrastructure.



**PipeGuard  
Robotics**

**Atantares.** In an era of precision medicine, diagnostics able to unravel healthcare inefficiencies and the mysteries of patient outcomes will emerge as the new therapeutics. With this creed, Atantares Corp. ("atantares") strength lies in designing and producing microsystem technologies tailored for the next generation of smart, precision medical applications. Our first line of products aims at transforming the management of clotting and bleeding conditions. We are nerds... but we are nerds with vision.



**Atantares**

# CONTEST FINALE



**PowerHive LLC**

**PowerHive LLC.** PowerHive LLC is developing unique soft, smart, and safe hands for robots to pick up any object, which is an extremely under-served area in robotics. Manual loose object handling operations for picking and packing in e-commerce order fulfilment, packing or similar businesses are very mundane and repetitive. PowerHive's solution used complex computer vision and AI algorithms to detect a lot of features about an object, which is safe, affordable, compatible with existing robot hardware to control grasping.

**PI Tutor.** PI Tutor aims to bring education to the next level of autonomy and personalization through explainable artificial intelligence. It targets the repetitive nature of homework grading and uneven distribution of teaching resources and provides accurate end-to-end automatic AI grading and affordable personalized AI tutoring to schools, institutions and students. Users can solve any problems in any methods of their own choices, and PI Tutor automatically detects the mistakes made in their steps, analyzes the reasons behind these mistakes, and returns personalized tutoring solutions. PI Tutor has influenced millions of people and will strive to make more changes.



**PI Tutor**



# CONTEST FINALE



**UrSure**

**UrSure.** UrSure is an HIV prevention company. We make diagnostic urine tests that measure patients' adherence to HIV preventive medications. Our tests allow doctors to identify which patients need more support, allocate resources, and improve adherence levels.



**Lind Health**

**Lind Health.** Lind Health is a healthcare technology solutions company addressing unmet needs in medical care today. We focus on high impact improvements in areas such as clinical decision making, care delivery, and operation efficiency while incorporating patient centered perspectives in our approach. We are currently building a clinical trial recommendation engine to empower patients and clinicians in the search of life-saving treatments.

**Cogentis.** Cogentis is a pre-clinical, pre-money biotech working with the NIH and academia to cure Alzheimer's Disease. We are developing an unprecedented patented therapy that overcomes previous obstacles to reverse the underlying disease process. Rather than inhibiting normal biology, our nontoxic approach restores normal function and has already been shown to reverse the disease in mouse models of Alzheimer's. Promising data points to using a similar therapy to treat Parkinson's disease (PD), amyotrophic lateral sclerosis (ALS), and other forms of dementia like frontotemporal dementia and progressive supranuclear palsy. We are raising an initial \$3MM to propel us through the IND process with a goal to go to Phase I trials by 2023.



**Cogentis**

# SPONSORS

## DIAMOND SPONSORS



**ZhenFund**  
真格基金

**ZhenFund**  
[zhenfund.com](http://zhenfund.com)

ZhenFund is a Beijing-based seed fund which is dedicated to helping entrepreneurs build successful companies by providing them with mentorship and the best resources available.



**EBO Global Innovation Capital**  
[egicapital.xyz](http://egicapital.xyz)

EBO Global Innovation Capital has the goal to help entrepreneurs turn their own ideas and visions into successful companies with fundraising and networking guidance.



**CRI INCUBATOR**  
[yclincubator.com](http://yclincubator.com)

CRI is a non-profit organization, aiming to connect global radical innovation resources with China upgrading industrial demands.

## PLATINUM SPONSORS



**MIT China Future City Lab**  
[stl.mit.edu](http://stl.mit.edu)

A MIT based lab designed to support research and startup teams applying ideas to China's rapidly growing urban areas



**Tencent**  
[tencent.com](http://tencent.com)

A leading provider of Internet value added services in China.



**Shenzhen Valley Ventures**  
[svv.io](http://svv.io)

The first hardware incubator founded by people who actually make things.



**BAISHAN CLOUD**  
[en.baishancloud.com](http://en.baishancloud.com)

We are the cloud data service provider focusing on data life cycle management.

## GOLD SPONSORS



Hong Kong  
X-Tech  
Startup  
Platform



XtalPi



UniWill  
Ventures



Launch Hill



New Gen  
Partners



Inno-China

## PARTNERS



MIT Hongkong  
Innovation Node



MIT Innovation  
initiative

## SPONSORS



Martin Trust  
Center for MIT  
Entrepreneurship



MIT Energy  
Initiative



ZHONGGUANCUN  
Development  
Group



Ant Financial



MIT Industrial  
Liaison Program  
(ILP)



Innovation Ideas  
Institute



Synced



MIT Legatum  
Center for  
Development and  
Entrepreneurship



ACT Lab



Wuxi Science  
and Technology  
Bureau



Shenzhen  
Luohu People's  
Government



MASSCHALLENGE  
BOSTON



LeaguerX



# MIT · CHIEF

MIT-CHINA INNOVATION AND ENTREPRENEURSHIP FORUM  
麻省理工学院中国创新与创业论坛

Founded in 2011 by a group of MIT students, MIT-CHIEF is a not-for-profit student organization registered at MIT. We are committed to promoting intellectual exchanges and collaborations between China and the United States in technology, innovation and entrepreneurship.

As one of the largest entrepreneur communities on the East Coast, we strive to connect the most valuable US-based startups with leading investors, strategic partners and market access bilaterally in China and US.



## Homepage

[www.mitchief.org](http://www.mitchief.org)

## Facebook

MIT-China Innovation and Entrepreneurship Forum

## LinkedIn

MIT-China Innovation and Entrepreneurship Forum

## Twitter

@chiefmit

## Weibo

@MIT 中国创新与创业论坛

## Wechat Platform

mitchief

# ABOUT

